

## Box Properties

### --Description--

Name:

Type: Vented Box

Shape: Prism, square

### --Box Parameters--

Vb = 3 cu.ft

V(total) = 3.375 cu.ft

Fb = 40.45 Hz

F3 = 30.79 Hz

Fill = none

### --Vents--

No. of Vents = 1

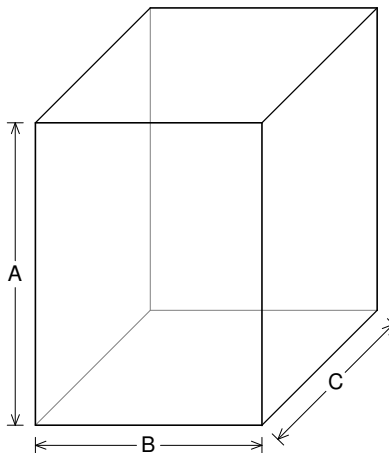
Vent shape = rectangle

Vent ends = one flush

Hv = 2 in

Wv = 10 in

Lv = 8.5 in



### --External Dimensions--

A = 24 in

B = 18 in

C = 17.21 in

### --Internal Dimensions--

A = 22.5 in

B = 16.5 in

C = 15.71 in

### --Wall Thickness--

Front = 0.75 in

Side = 0.75 in

## Driver Properties

### --Description--

Name: SXX 15 D4

Type: Standard one-way driver

Company: RE Audio (2015)

### --Configuration--

**No. of Drivers = 1**

Dual voice coils = parallel

### --Driver Parameters--

Fs = 44.67 Hz

Qms = 10.22

Vas = 1.311 cu.ft

Xmax = 1.1 in

Sd = 128.6 sq.in

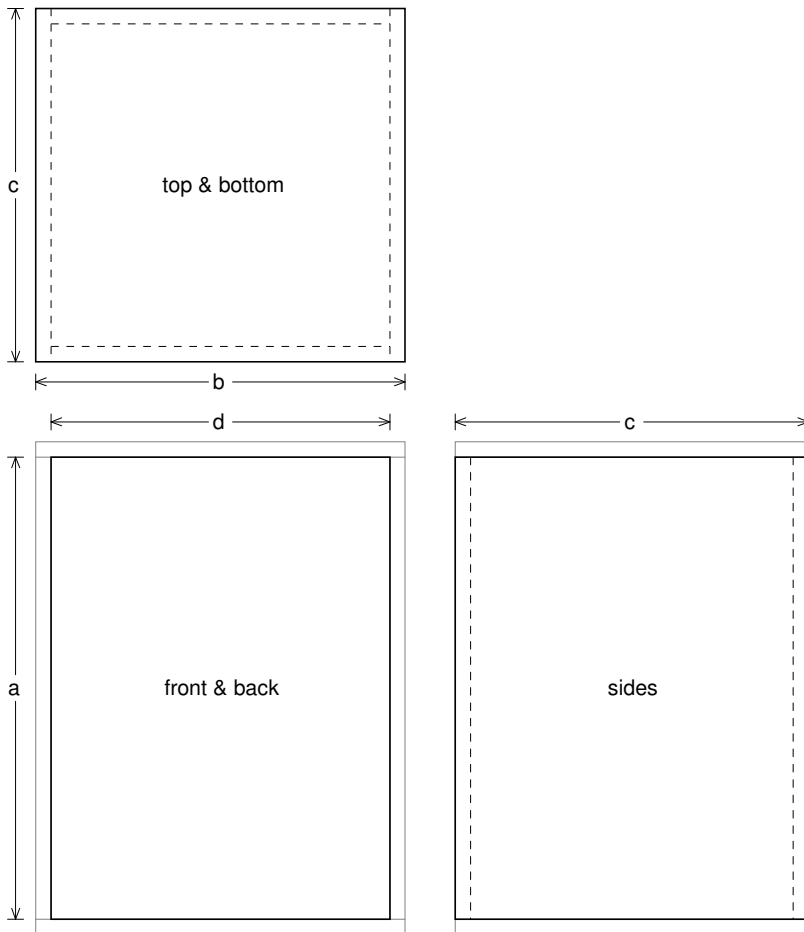
Qes = 0.998

Re = 2.034 ohms

Le = 2.268 mH

Z = 2.441 ohms

Pe = 1200 watts



### Box Parts

Box Shape: Square Prism

1 Top, 1 Bottom: depth ( $c$ ) = 17.21 in  
width ( $b$ ) = 18, thickness = 0.75 in

1 Front, 1 Back: height ( $a$ ) = 22.5 in  
width ( $d$ ) = 16.5, thickness = 0.75 in

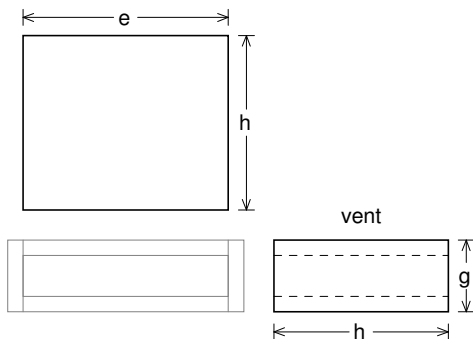
2 Sides: height ( $a$ ) = 22.5 in  
depth ( $c$ ) = 17.21, thickness = 0.75 in

--Driver Mounting--  
Mounting: Front

--Vent Parts--

1 Top, 1 Bottom:  
width ( $e$ ) = 10, length ( $h$ ) = 8.5 in  
thickness = 0.75 in

2 Sides:  
height ( $g$ ) = 3.5, length ( $h$ ) = 8.5 in  
thickness = 0.75 in





### Wiring Diagram

